

**DF42 (A71901)**

## **PARTS CATALOG**

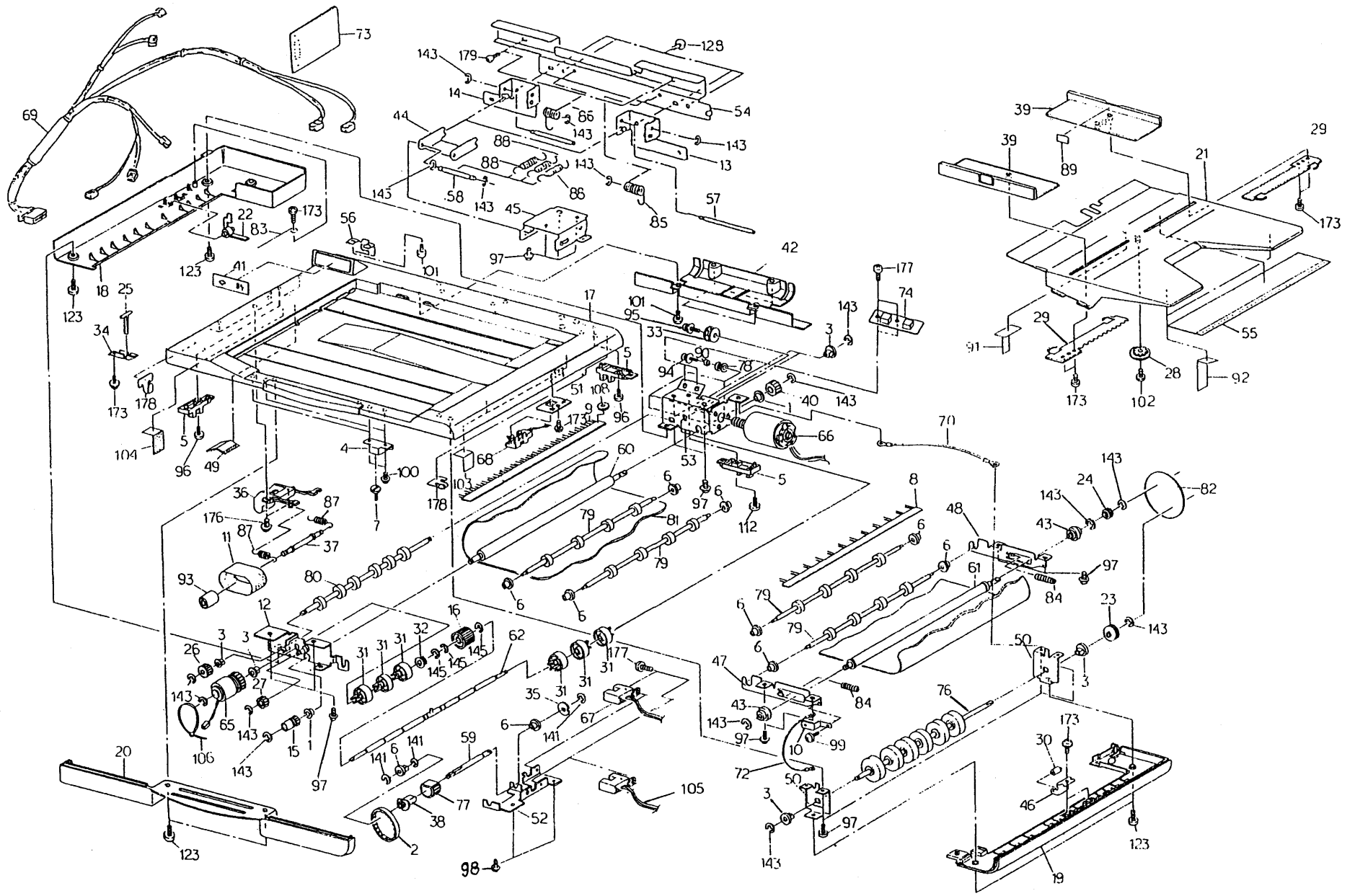
### **INTRODUCTION**

This chapter instructs you the numbers and names of this parts on this machine.

### **INDEX to PARTS CATALOG**

1.DF UNIT (A71901) .....	2
<b>PARTS INDEX.....</b>	<b>5</b>

# 1. DF UNIT (A71901)



## 1. DF UNIT (A71901)

Index No.	Part No.	Description	Q'ty Per Assembly
1	0741 3706A	Bearing:D6	
2	A719 2001	Timing Belt	
3	A719 2002	Bushing: D6	
4	A719 2003	Magnet Catch	
5	A719 2004	Sensor: Photo Interrupter	
6	A719 2005	Bushing: D4	
7	A719 2006	Stud	
8	A719 2007	Anti Static Brush	
9	A719 2092	Anti Static Brush	
10	A719 2008	Earth Plate	
11	A719 2009	Belt: Separation	
12	A719 2010	Ass'y: Side Plate: Front	
13	A719 2011	Ass'y: Hinge Holder: Right	
14	A719 2012	Ass'y: Hinge Holder: Left	
15	A719 2013	Ass'y: Gear Transport	
16	A719 2014	Ass'y: Hub Separation	
17	A719 2018	Cover: Main	
18	A719 2019	Cover: Feed In	
19	A719 2020	Cover: Feed Out	
20	A719 2021	Cover Handle	
21	A719 2022	Table: Paper	
22	A719 2023	Feeler: Regist	
23	A719 2024	Pulley: Exit	
24	A719 2025	Pulley: Transport	
25	A719 2027	Feeler: Paper Detect	
26	A719 2028	Gear: Regist	
27	A719 2029	Idle: Gear	
28	A719 2030	Pinion	
29	A719 2031	Rack: Table	
30	A719 2032	Idle: Exit Roller	
31	A719 2033	Regist Roller: Idle	
32	A719 2034	Pulley: Pick-up Drive	
33	A719 2035	Pulse Generator	
34	A719 2036	Cover: Paper Detect	
35	A719 2037	Pulse Generator: Pick-up	



Index No.	Part No.	Description	Q'ty Per Assembly
36	A719 2038	Belt Guide: Separation	
37	A719 2039	Shaft: Separation Belt	
38	A719 2040	Hub: Pick-up	
39	A719 2041	Side Guide: Table	
40	A719 2042	Gear: Motor	
41	A719 2043	OP Window	
42	A719 2044	Cover: Rear	
43	A719 2045	Bushing: Transport	
44	A719 2046	Arm: Hinge	
45	A719 2047	Bracket: Hinge	
46	A719 2048	Bracket: Exit Idle	
47	A719 2049	Bracket: Transport: Front	
48	A719 2050	Bracket: Transport: Rear	
49	A719 2060	Plate: Pick-up Roller	
50	A719 2051	Bracket: Exit	
51	A719 2052	Bracket: Exit Sensor	
52	A719 2053	Bracket: Feed In	
53	A719 2016	Ass'y: Side Plate: Rear	
54	A719 2054	Hinge Base	
55	A719 2055	Mylar: Paper Table	
56	A719 2056	Bracket: Interface Harness	
57	A719 2061	Shaft: Hinge Fulcrum	
58	A719 2062	Shaft: Hinge	
59	A719 2063	Shaft: Pick-up	
60	A719 2064	Shaft: Roller: Tran: Drive	
61	A719 2065	Roller: Transport: Idle	
62	A719 2015	Ass'y: Shaft: Separation	
65	A719 2068	Ass'y: Micro Clutch	
66	A719 2069	Motor: Micro Clutch	
67	A719 2072	Sensor: Photo (doc.set)	
68	A719 2071	Sensor: Exit	
69	A719 2077	Ass'y: M/H: Main: ADF	
70	A719 2075	Earth Wire: 1	
72	A719 2076	Wire: Anti Static Brush	
73	A719 2073	PWB: SR-ADF2: Main	

Index No.	Part No.	Description	Q'ty Per Assembly
74	A719 2074	OP PCB Board	
76	A719 2078	Roller: Exit	
77	A719 2079	Roller: Pick-up	
78	A719 2084	Damper: Motor	
79	A719 2080	Transport Roller Middle	
80	A719 2081	Regist Roller: Drive	
81	A719 2082	Belt: Transport	
82	A719 2083	Belt: Exit	
83	A719 2085	Spring: Regist Sensor	
84	A719 2086	Spring: Tension	
85	A719 2087	Torsion Spring: Right	
86	A719 2088	Torsion Spring: Left	
87	A719 2089	Spring: Separation Shaft	
88	A719 2090	Spring: Hinge	
89	A719 7038	Decal:Paper Set	
90	A719 2066	Bushing: Damper	
91	A719 2057	Mylar: Stack 1	
92	A719 2058	Mylar: Stack 2	
93	A719 2026	Roller Separation Belt	
94	0957 3010W	SCR:M3x10 W/Washer Dio	
95	0957 3020W	SCR:M3x20 W/Washer	
96	0434 0122W	Pan Head Self-tapping Screw - M4x12	
97	0960 4008W	Philips Flange Screw - M4x8	
98	0960 3008W	Philips Flange Screw - M3x8	
99	0433 0060W	Tapping Screw - M3x6	

Index No.	Part No.	Description	Q'ty Per Assembly
100	0434 0082W	Tapping Screw - M4x8	
101	0434 0062W	Pan Head Tapping Screw - M4x6	
102	0960 3005W	Philips Flange Screw - M3 X 5	
103	A719 2059	Mylar: Exit	
104	A719 2017	Mylar: Ass'y Feed In	
105	A719 2070	Pick Up Sensor	
106	1105 0047	Cable Tie 150mm	
108	0705 0040B	Toothed Washer	
112	0314 0120W	Philips Pan Head Screw - M4x12	
123	0344 0060D	Philips Truss Head Screw - M4x6	
128	0434 0060W	Tapping Screw - M4x6	
141	0720 0025E	Retaining Ring - M2.5	
143	0720 0040E	Retaining Ring - M4	
145	0720 0060E	Retaining Ring - M6	
173	0965 3006W	Tapping Screw With Flat Washer-m3x6	
176	0965 4008W	Tapping Screw With Flat Washer-m4x8	
177	0313 0060W	Philips Pan Head Screw - M3x6	
178	1400 0027	Transistor - 2SC372Y	
179	A719 2067	Hinge Stud	

# **PARTS INDEX**

Part No.	Description	Page and Index No.
A719 2001	Timing Belt	3- 2
A719 2002	Bushing: D6	3- 3
A719 2003	Magnet Catch	3- 4
A719 2004	Sensor: Photo Interrupter	3- 5
A719 2005	Bushing: D4	3- 6
A719 2006	Stud	3- 7
A719 2007	Anti Static Brush	3- 8
A719 2008	Earth Plate	3- 10
A719 2009	Belt: Separation	3- 11
A719 2010	Ass'y: Side Plate: Front	3- 12
A719 2011	Ass'y: Hinge Holder: Right	3- 13
A719 2012	Ass'y: Hinge Holder: Left	3- 14
A719 2013	Ass'y: Gear Transport	3- 15
A719 2014	Ass'y: Hub Separation	3- 16
A719 2015	Ass'y: Shaft: Separation	3- 62
A719 2016	Ass'y: Side Plate: Rear	3- 53
A719 2017	Mylar: Ass'y Feed In	3-104
A719 2018	Cover: Main	3- 17
A719 2019	Cover: Feed In	3- 18
A719 2020	Cover: Feed Out	3- 19
A719 2021	Cover Handle	3- 20
A719 2022	Table: Paper	3- 21
A719 2023	Feeler: Regist	3- 22
A719 2024	Pulley: Exit	3- 23
A719 2025	Pulley: Transport	3- 24
A719 2026	Roller Separation Belt	3- 93
A719 2027	Feeler: Paper Detect	3- 25
A719 2028	Gear: Regist	3- 26
A719 2029	Idle: Gear	3- 27
A719 2030	Pinion	3- 28
A719 2031	Rack: Table	3- 29
A719 2032	Idle: Exit Roller	3- 30
A719 2033	Regist Roller: Idle	3- 31
A719 2034	Pulley: Pick-up Drive	3- 32
A719 2035	Pulse Generator	3- 33

Part No.	Description	Page and Index No
A719 2036	Cover: Paper Detect	3- 34
A719 2037	Pulse Generator: Pick-up	3- 35
A719 2038	Belt Guide: Separation	3- 36
A719 2039	Shaft: Separation Belt	3- 37
A719 2040	Hub: Pick-up	3- 38
A719 2041	Side Guide: Table	3- 39
A719 2042	Gear: Motor	3- 40
A719 2043	OP Window	3- 41
A719 2044	Cover: Rear	3- 42
A719 2045	Bushing: Transport	3- 43
A719 2046	Arm: Hinge	3- 44
A719 2047	Bracket: Hinge	3- 45
A719 2048	Bracket: Exit Idle	3- 46
A719 2049	Bracket: Transport: Front	3- 47
A719 2050	Bracket: Transport: Rear	3- 48
A719 2051	Bracket: Exit	3- 50
A719 2052	Bracket: Exit Sensor	3- 51
A719 2053	Bracket: Feed In	3- 52
A719 2054	Hinge Base	3- 54
A719 2055	Mylar: Paper Table	3- 55
A719 2056	Bracket: Interface Harness	3- 56
A719 2057	Mylar: Stack 1	3- 91
A719 2058	Mylar: Stack 2	3- 92
A719 2059	Mylar: Exit	3-103
A719 2060	Plate: Pick-up Roller	3- 49
A719 2061	Shaft: Hinge Fulcrum	3- 57
A719 2062	Shaft: Hinge	3- 58
A719 2063	Shaft: Pick-up	3- 59
A719 2064	Shaft: Roller: Tran: Drive	3- 60
A719 2065	Roller: Transport: Idle	3- 61
A719 2066	Bushing: Damper	3- 90
A719 2067	Hinge Stud	3- 179
A719 2068	Ass'y: Micro Clutch	3- 65
A719 2069	Motor: Micro Clutch	3- 66
A719 2070	Pick Up Sensor	3-105

Part No.	Description	Page and Index No.
A719 2071	Sensor: Exit	3- 68
A719 2072	Sensor: Photo (doc.set)	3- 67
A719 2073	PWB: SR-ADF2: Main	3- 73
A719 2074	OP PCB Board	3- 74
A719 2075	Earth Wire: 1	3- 70
A719 2076	Wire: Anti Static Brush	3- 72
A719 2077	Ass'y: M/H: Main: ADF	3- 69
A719 2078	Roller: Exit	3- 76
A719 2079	Roller: Pick-up	3- 77
A719 2080	Transport Roller Middle	3- 79
A719 2081	Regist Roller: Drive	3- 80
A719 2082	Belt: Transport	3- 81
A719 2083	Belt: Exit	3- 82
A719 2084	Damper: Motor	3- 78
A719 2085	Spring: Regist Sensor	3- 83
A719 2086	Spring: Tension	3- 84
A719 2087	Torsion Spring: Right	3- 85
A719 2088	Torsion Spring: Left	3- 86
A719 2089	Spring: Separation Shaft	3- 87
A719 2090	Spring: Hinge	3- 88
A719 2092	Anti Static Brush	3- 9
A719 7038	Decal:Paper Set	3- 89

Part No.	Description	Page and Index No
0313 0060W	Philips Pan Head Screw - M3x6	3-177
0314 0120W	Philips Pan Head Screw - M4x12	3-112
0344 0060D	Philips Truss Head Screw - M4x6	3-123
0433 0060W	Tapping Screw - M3x6	3- 99
0434 0060W	Tapping Screw - M4x6	3-128
0434 0062W	Pan Head Tapping Screw - M4x6	3-101
0434 0082W	Tapping Screw - M4x8	3-100
0434 0122W	Pan Head Self-tapping Screw - M4x12	3- 96
0705 0040B	Toothed Washer	3-108
0720 0025E	Retaining Ring - M2.5	3-141
0720 0040E	Retaining Ring - M4	3-143
0720 0060E	Retaining Ring - M6	3-145
0741 3706A	Bearing:D6	3- 3-
0957 3010W	SCR:M3x10 W/Washer Dio	3- 94
0957 3020W	SCR:M3x20 W/Washer	3- 95
0960 3005W	Philips Flange Screw - M3 X 5	3-102
0960 3008W	Philips Flange Screw - M3x8	3- 98
0960 4008W	Philips Flange Screw - M4x8	3- 97
0965 3006W	Tapping Screw With Flat Washer-m3x6	3-173
0965 4008W	Tapping Screw With Flat Washer-m4x8	3-176
1105 0047	Cable Tie 150mm	3-106
1400 0027	Transistor - 2SC372Y	3-178